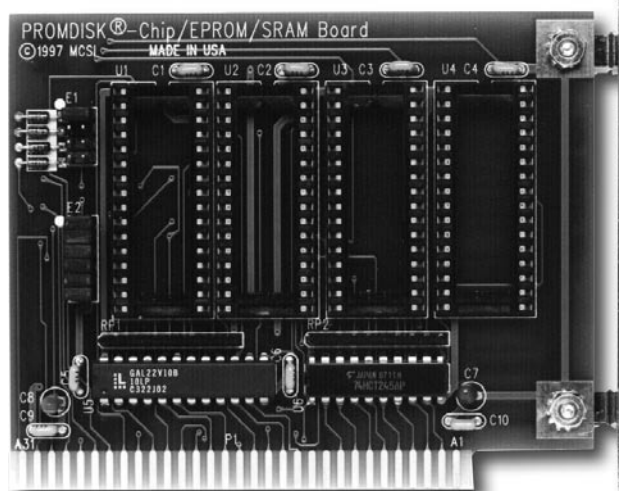


General Purpose BIOS Extension Memory Board



Description

The PROMDISK-Chip/EPROM/SRAM board is a general purpose memory board designed for use in IBM PC/XT/AT compatible computers to provide additional memory in the D000H-EFFFH BIOS extension address space of system memory. The board will support up to four 32-pin JEDEC standard 8Kx8, 32Kx8, 64Kx8, and 128Kx8 devices. It allows the use of PROMDISK-Chips, EPROMs, Flash EPROMs, SRAMs, or NVRAMs. The board can accommodate up to 128K bytes of memory depending on the number and type of memory chips used. Device types are not intended to be mixed, although some cases of mixing EPROMs, and SRAMs may be possible.

When using MCSI PROMDISK-Chips, the board will emulate a read/write hard disk drive up to 64MB bytes while occupying only 32K of address space. A Clock/Calendar function may be added by using a Dallas DS1216E Smartwatch chip. This option is transparent to the memory device installed in the adapter. MCSI's PROMDISK Disk Emulator Software can be used with the PROMDISK-Chip/EPROM/SRAM board to configure a small solid state disk emulator using EPROM or SRAM in place of a physical disk, permitting construction of diskless terminals, workstations, controllers, instruments, etc.

Features

- Low Cost BIOS Extension Memory Board
- Supports Four 32-pin Standard Byte-wide Memories
- Useful for PROMDISK-Chip hardware and software development
- Jumper Selectable Address Boundaries
- Supports Flash, EPROMs, NVRAMs and SRAMs
- Low Power CMOS Design
- Standard Quarter Size "XT" Plug-in Board
- Y2K Compliant

Memory

128KB total (Memory Chips Not Included). Four 32 pin JEDEC Standard Sockets.

Access Time: 150 nanoseconds maximum.

Chip Types: EPROMs, FLASH EPROMs, SRAMs, NVRAMs, or PROMDISK-Chips.

Bus

ISA compatible bus (62-pin edge connector).

DMA

None

Interrupts

None

I/O Ports

Memory command and data port jumper selectable.

Dimensions

XT type board 4.04"L X 3.35"H.

Power

+5VDC @ .04A.

Ordering Information

The EPROM/SRAM Board can be ordered in the following configurations:

72600	PROMDISK-Chip/EPROM/SRAM Board
72601	PROMDISK-Chip 4MB Evaluation Kit
72602	PROMDISK-Chip 8MB Evaluation Kit
72603	PROMDISK-Chip 16MB Evaluation Kit